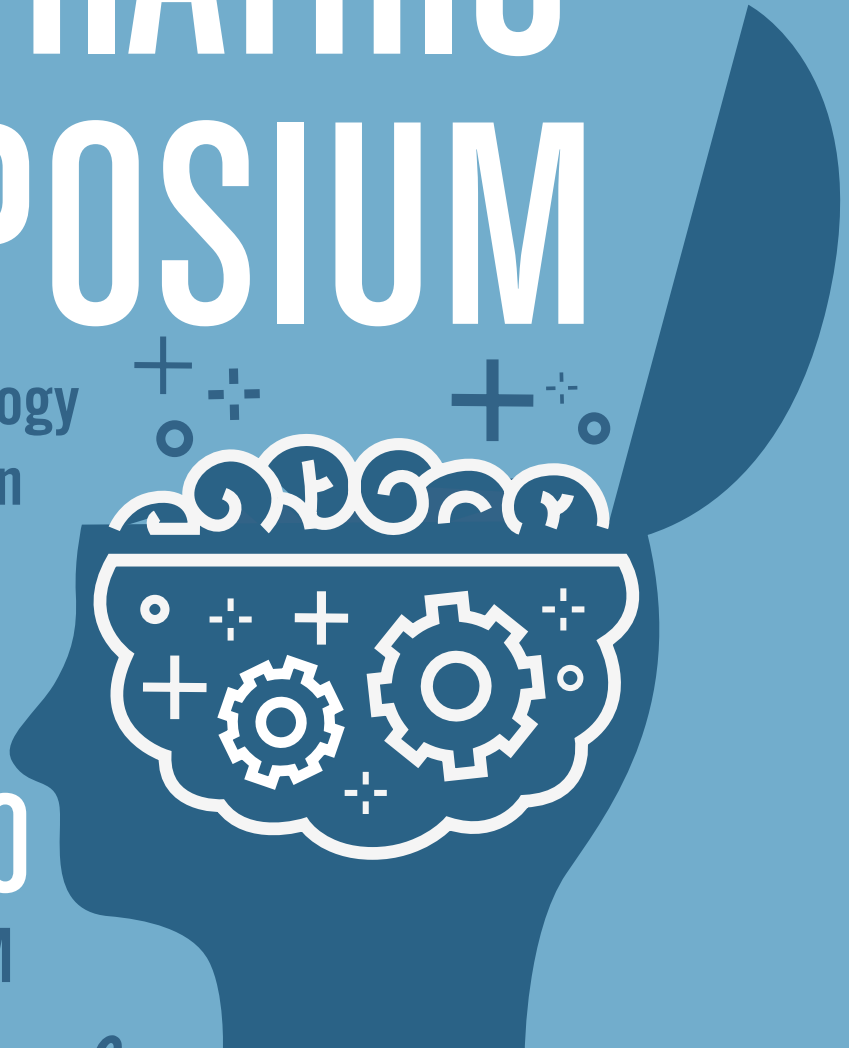


23<sup>rd</sup> Fall

# PSYCHIATRIC SYMPOSIUM

Psychopharmacology  
Update & Addiction  
Institute



NOV. 18-20

8:30 AM - 4:55 PM

*Virtual Conference*

**REGISTER AT:** <https://23rd-fall-psychiatric-symposium.heysummit.com>

---

CONTINUING EDUCATION UNITS ACKNOWLEDGED THROUGH THE FOLLOWING:

University of Tennessee College of Nursing

University of Tennessee Graduate School of Medicine

Knoxville Area Psychological Association

National Association of Social Workers – TN Chapter

Mental Health Association of East Tennessee

Tennessee Department of Mental Health &  
Substance Abuse Services, Division of Substance Abuse Services



**REGISTRATION CLOSING DATE:** The Mental Health Association may, in its sole discretion, close registration earlier than the published registration deadlines due to virtual platform capacity. Early registration is encouraged.

**TRANSCRIPT RECORDS REQUESTS:** Attendees receive CME or CE certificates in a timely manner after the event. Any request for archival records / certificate replacement beyond (older than) the immediate prior Symposium will be processed & will incur a \$20 certificate replacement fee payable to the accrediting organization or the Mental Health Association of East Tennessee. No fee applies to the transcript records requested within six months of the previous Symposium.

# SCHEDULE +

*Wednesday, November 18*

8:30 - 10 AM

## COVID & THE MENTAL HEALTH CRISIS

Paul Gionfriddo, President & CEO Mental Health America, Alexandria, VA

Break

10:15 - 11:45 AM

## TARGETED PAIN TREATMENT : INTERVENTIONAL APPROACHES TO TARGET ANATOMIC CAUSES OF PAIN

Stephanie G. Vanterpool, MD, MBA, University of Tennessee Medical Center, Knoxville, TN

Break

12 - 1:30 PM

## ADVANCES IN NEUROBIOLOGICAL UNDERSTANDING OF ADHD & NOVEL TREATMENTS

Vladimir Maletic, MD University of South Carolina School of Medicine, Greenville, SC

Break

1:45 - 3:15 PM

## COVID-19: THE HIDDEN IMPACT ON DIVERSE POPULATIONS

David Cunningham, Director of Development, LADAC II, NCACI, QCS, Terry Shapiro, Tom Pecca, Amanda Marino, Ken Seely

3:25 - 4:55 PM

## DEVELOPMENTAL TRAUMA IN SUBSTANCE ABUSE

Jaclyn (Jackie) Werboff, MA, LMHC – Augustine Recovery, St. Augustine, FL

*Thursday, November 19*

8:30 - 10 AM

## ADDRESSING THE NEW MONSTER IN AMERICAN MENTAL HEALTH: FACING DOWN THE WELLNESS DEFICIT DISORDER

Rakesh Jain, MD, Texas Tech University School of Medicine & Saundra Jain, MA, PsyD, LPC, University of Texas at Austin, TX

Break

10:15 - 11:45 AM

## HOW TO CHOOSE AN ANTIPSYCHOTIC

Jami Woods, DPh, MD, APN, ACSP University of California Riverside School of Medicine, Riverside, CA

## Break

12 - 1:30 PM

### NEUROMODULATION: BETTER LIVING THROUGH ELECTRONS, PHOTONS AND SOUND WAVE

Lane Cook, MD, Private Practice, Knoxville, TN

## Break

1:45 - 3:15 PM

### ADVANCES IN NEUROBIOLOGICAL UNDERSTANDING OF BIPOLAR DEPRESSION AND NOVEL TREATMENTS

Vladimir Maletic, MD University of South Carolina School of Medicine, Greenville, SC

## Break

3:25 - 4:55 PM

### PRESCRIBING HOPE FOR RECOVERY

Pat Deegan, PhD, Dartmouth Institute on Health Policy and Clinical Practice, Geisel School of Medicine, Dartmouth College, Byfield, MA

*Friday, November 20*

8:30 - 10 AM

### GENDER DYSPHORIA

Jami Woods, DPh, MD, APN, ACSP University of California Riverside School of Medicine, Riverside, CA

## Break

10:15 - 11:45 AM

### HEALING RACIAL TRAUMA IN THERAPEUTIC PRACTICE

Donna Mitchell, LMSW, Private Practice, Knoxville, TN

## Break

12 - 1:30 PM

### ETHICAL ISSUES IN WORKING WITH MEDICALLY AND PSYCHIATRICALY COMPLEX PATIENTS: LIMITED RESOURCES, DIFFICULT CHOICES

Annette Mendola, PhD, University of Tennessee Medical Center at Knoxville, Knoxville, TN

## Break

1:45 - 3:15 PM

### CULTIVATING RESILIENCE WITH INDUCED NONDUAL AWARENESS

Melanie McGhee, PhD, Private Practice, Maryville, TN; David Patterson, PhD, University of Tennessee College of Social Work

## Break

3:25 - 4:55 PM

### ISSUES AND UPDATES ON TENNESSEE LAWS AND RULES THAT GOVERN THE PRACTICE OF PSYCHOLOGY

Pamela Auble, PhD, ABDP, Private Practice in Nashville, TN



*Pro-tip*

LOG IN to the conference 15-30 minutes EARLY to avoid connection problems  
Link will be sent to you a few days before the conference at the email address you provided when registering

# CONTINUING EDUCATION INFORMATION:

## PHYSICIANS:

**ACCREDITATION:** This activity has been planned and implemented in accordance with the accreditation requirements and policies of the Accreditation Council For Continuing Education through the joint providership of the University of Tennessee College of Medicine and the Mental Health Association of East Tennessee. The University of Tennessee College of Medicine is accredited by the ACCME to provide continuing medical education for physicians.

**EDUCATION CREDITS:** AMA: The University of Tennessee College of Medicine designates this live activity for a maximum of 22.5 AMA PRA Category 1 Credits™. Physicians should claim only the credit commensurate with the extent of their participation in the activity.

**PAS, NPS AND NURSES:** Physician Assistants, Nurse Practitioners and Nurses may use these credit hours toward certification renewal. This credit is acceptable by the American Academy of Physician Assistants (AAPA), American Nurses Credentialing Association (ANCC) and the American Academy of Nurse Practitioners (AANP).

**NURSES:** This program provides up to 22.5 contact hours through The University of Tennessee, College of Nursing. The University of Tennessee College of Nursing is an approved provider of continuing nursing education by the Tennessee Nurses Association, an accredited approver by the American Nurses Credentialing Center's Commission on Accreditation. The specific criteria for awarding contact hours for this event includes: breakout session attendance and completion of the session evaluation AND the completion / submission of conference evaluation. Participants must ADD & include \$10 CE Fee with registration.

**PSYCHOLOGISTS:** KAPA maintains responsibility for this program and its content. KAPA has designated up to 22.5 Type II credit hours for attendees of the 23rd Fall Psychiatric Symposium; up to 7.5 CE credits for each day Wednesday, November 18th, Thursday, November 19th, and Friday, November 20th.

The Symposium presentations will be pre-recorded, with live 15 minute Q&A sessions at the end of each segment. Because of this format and APA guidelines for Type I CE credits, KAPA will not be able to offer Type I certificates for participation in the Symposium this year. The credits obtained through KAPA for participation at the Symposium will be Type II CE credits. Under normal circumstances, Type II CE credits obtained via the internet are not eligible to fulfill the TN Board of Examiners in Psychology CE requirements for licensure recertification.

However, based on consultation with the TN BOE, KAPA has confirmed that the requirement for live in-person CEs has been suspended through the end of the year, so the Type II credits you receive from the Symposium will fulfill your Type II requirements for licensure.

See the KAPA website, [www.knoxvilleareapsychology.org](http://www.knoxvilleareapsychology.org) for additional information on individual workshops including educational objectives and instructional level. There is an additional \$20 fee for non-KAPA members wanting CE credit from KAPA. This fee is payable with your registration.

To receive CE credit Psychologists will be required to sign in and sign out at each session each day.

**SOCIAL WORKERS:** This program was approved by the National Association of Social Workers – Tennessee Chapter (Provider Number: NASWTN 2019-0099) to offer up to 22.5 continuing education units for the 23rd Fall Psychiatric Symposium November 18-20.

**LICENSED MARRIAGE & FAMILY THERAPISTS:** LMFTs are required by the TN Licensure Board to earn "Soft CEUs" or contact hours. Contact hours earned equal the total number of hours attended. Attendees may earn up to 22.5 contact hours based upon actual attendance.

**LICENSED ALCOHOL AND DRUG ABUSE COUNSELORS:** This training is approved by the Tennessee Department of Mental Health and Substance Abuse Services, Division of Substance Abuse Services, for up to 22.5 LADAC contact hours.

**PROFESSIONALS NOT LISTED:** Please note your accrediting organization may accept a certificate of attendance (contact hours) for attending the Fall Psychiatric Symposium. Certificates will be provided based on actual hours of attendance. It is the attendee's responsibility to verify the accrediting body can accept and apply this certificate of attendance toward CE requirements they may maintain.

**NOTE: THE MENTAL HEALTH ASSOCIATION MAY CLOSE REGISTRATION EARLY DUE TO FACILITY OR SESSION CAPACITY!**

23rd FALL PSYCHIATRIC SYMPOSIUM CEs / CMEs For: Nursing Physician Psychology Social Work LADAC

LMFT Other \_\_\_\_\_

Name: \_\_\_\_\_ Degrees: \_\_\_\_\_

Affiliation \_\_\_\_\_ Email: \_\_\_\_\_

Address \_\_\_\_\_

City/State/Zip \_\_\_\_\_ Phone: \_\_\_\_\_

**Continuing MEDICAL Education Credit (ONLY Required for Physicians enter data below):**

Last four digits of Social Security # \_\_\_\_\_

Birth Month and Year \_\_\_\_\_

## REGISTRATION FEES

## PLEASE CHECK

## MHA Members Save 10% on Registration

### DISCOUNTED RATE RECEIVED BY OCTOBER 31, 2020

- Wednesday ONLY \$165
- Thursday ONLY \$165 (Students w/ID \$120)
- Friday ONLY \$165 (Students w/ID \$120)
- Two days \$225
  - W
  - TH
  - F
- Wednesday, Thursday & Friday \$270 (Students w/ID \$175)
- ADD \$75 MHA Membership dues and save 10% on registration\*
- ADD \$20 Non-KAPA Member fee
- REQUIRED \$10 Nurse CE Certificate fee
- Discounted Fee – Total Due \$

### REGULAR RATE RECEIVED AFTER NOVEMBER 1, 2020

- Wednesday ONLY \$185 (Students w/ID \$140)
- Thursday ONLY \$185 (Students w/ID \$140)
- Friday ONLY \$185 (Students w/ID \$140)
- Two days \$250
  - W
  - TH
  - F
- Wednesday, Thursday & Friday \$295 (Students w/ID \$195)
- ADD \$75 MHA Membership dues & save 10% on registration\*
- ADD \$20 Non-KAPA Member fee
- REQUIRED \$10 Nurse CE Certificate fee
- Discounted Fee – Total Due \$

### LATE RATE ON OR AFTER NOVEMBER 7, 2020

- Wednesday ONLY \$200 (Students w/ID \$165)
- Thursday ONLY \$200 (Students w/ID \$165)
- Friday ONLY \$200 (Students w/ID \$165)
- Two days \$275
  - W
  - TH
  - F
- Wednesday, Thursday & Friday \$325 (Students w/ID \$200)
- ADD \$75 MHA Membership dues and save 10% on registration\*
- ADD \$20 Non-KAPA Member fee
- REQUIRED \$10 Nurse CE Certificate fee
- Discounted Fee – Total Due \$

## GROUP DISCOUNTS AVAILABLE | MUST CALL 865-584-9125 :

Groups of 5-9 (5% discount); Groups of 10+ (10% discount). To qualify, individuals must be registered at the same time with corporate or clinic payment.

MAKE CHECK PAYABLE TO: MENTAL HEALTH ASSOCIATION AND SEND TO PO BOX 32731 KNOXVILLE, TN 37930-2731.

REFUNDS will be made (excluding a \$50 processing fee) For cancellations received by 5PM November 6, 2020.

Cancellation received after that date will not receive a refund.

PAYMENT: CHECK ENCLOSED \_\_\_\_\_ Or Call 865-584-9125 or FAX form with CREDIT CARD info. to: 865-824-0040

Account No \_\_\_\_\_ Exp. Date \_\_\_\_ / \_\_\_\_ Security Code \_\_\_\_\_ Card

Billing Zip Code \_\_\_\_\_

VISA MasterCard American Express Discover

Signature \_\_\_\_\_

\*Professional Members are treatment professionals (MDs, PhDs, RNs, LCSWs etc.) who make a membership contribution of \$75 or more to the MHA annually. Professional Member Benefits include: 10% off training fees, referral listing, 50 free brochures, newsletters, bulk brochure pricing.

JOIN TODAY – SAVE 10% OFF Registration

# CONFERENCE LEARNING OBJECTIVES:

- Participants will be able to review and discuss wellness and resilience and the neurobiological impact on health impact on mental health.
- Participants will be able to describe neurobiology and novel treatment choices.
- Participants will be able to review and describe addiction and addiction recovery in men and women.
- Participants will be able to review and discuss ethical responsibilities in clinical practice.

## MAKE SURE TO CHECK OUT THE VIRTUAL EXHIBIT HALL!

FOR SPONSORSHIP & EXHIBITOR OPPORTUNITIES  
contact Ben Harrington at [ben@mhaet.com](mailto:ben@mhaet.com) -or- 865-584-9125

*Thank you to our Sponsors!* 



23<sup>rd</sup> Fall  
**PSYCHIATRIC  
SYMPOSIUM**



**REGISTER AT:**

<https://23rd-fall-psychiatric-symposium.heysummit.com>

**MARK YOUR CALENDARS!**

*November 18-20, 2020*

**Up to 22.5 Hours CME / CE**

